



Wythenshawe
Community Housing Group




Fire Alarm Plans

Fire Alarm key






Installation of Fire Alarm system at Birch Tree Court

Key to devices

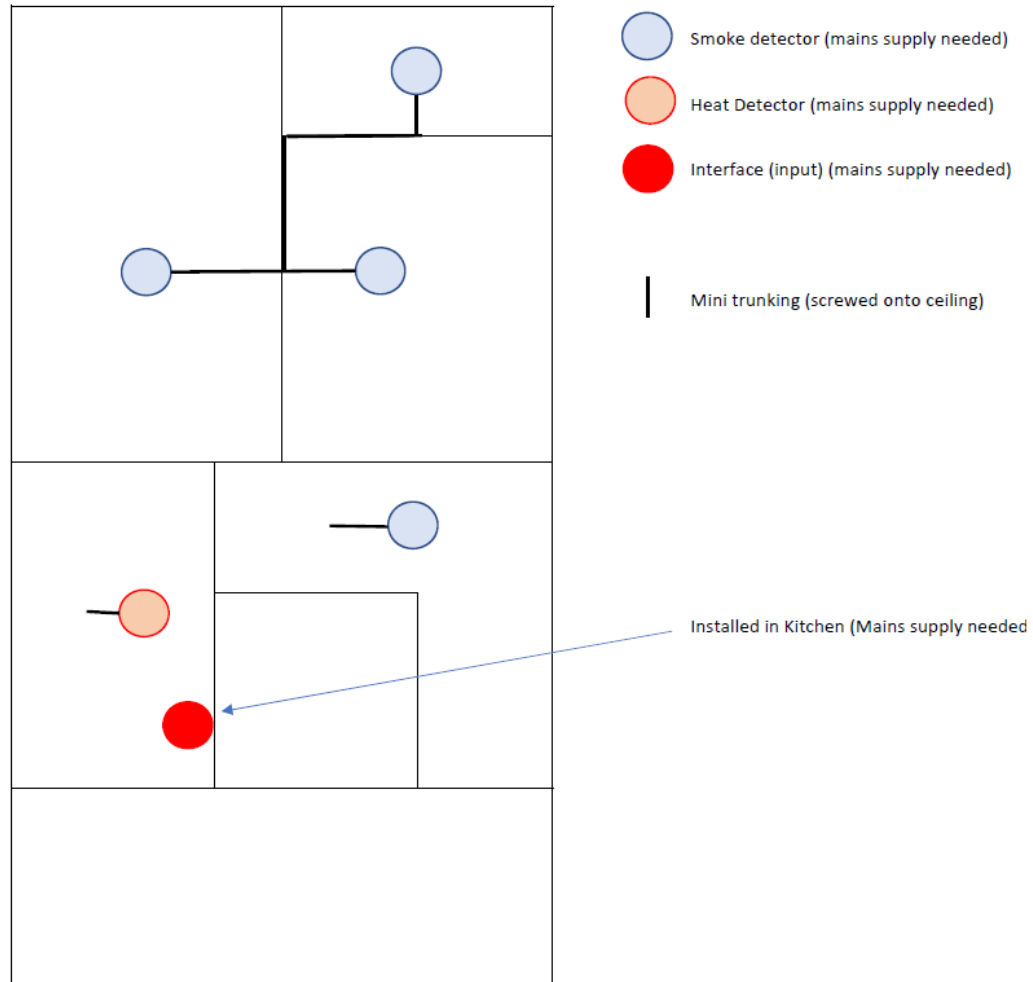
Inside flats

-  Smoke detector
-  Heat Detector
-  Interface (input)

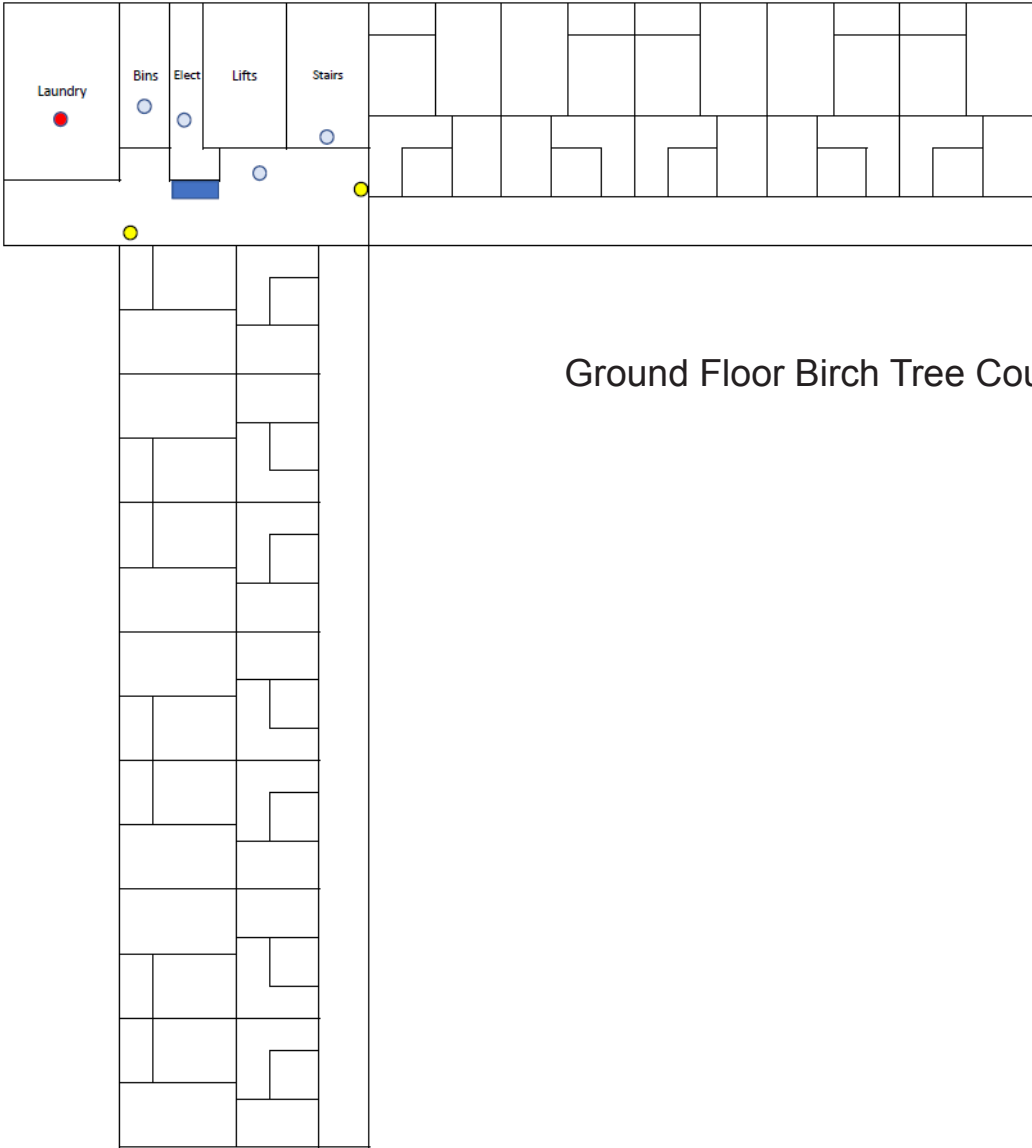
Comuninal Areas

-  Fire alarm panel
-  Break Glass Call point
-  Heat detector with base sounder
-  Smoke detector some with base sounder
-  Flats fire alarm interface 3 channel

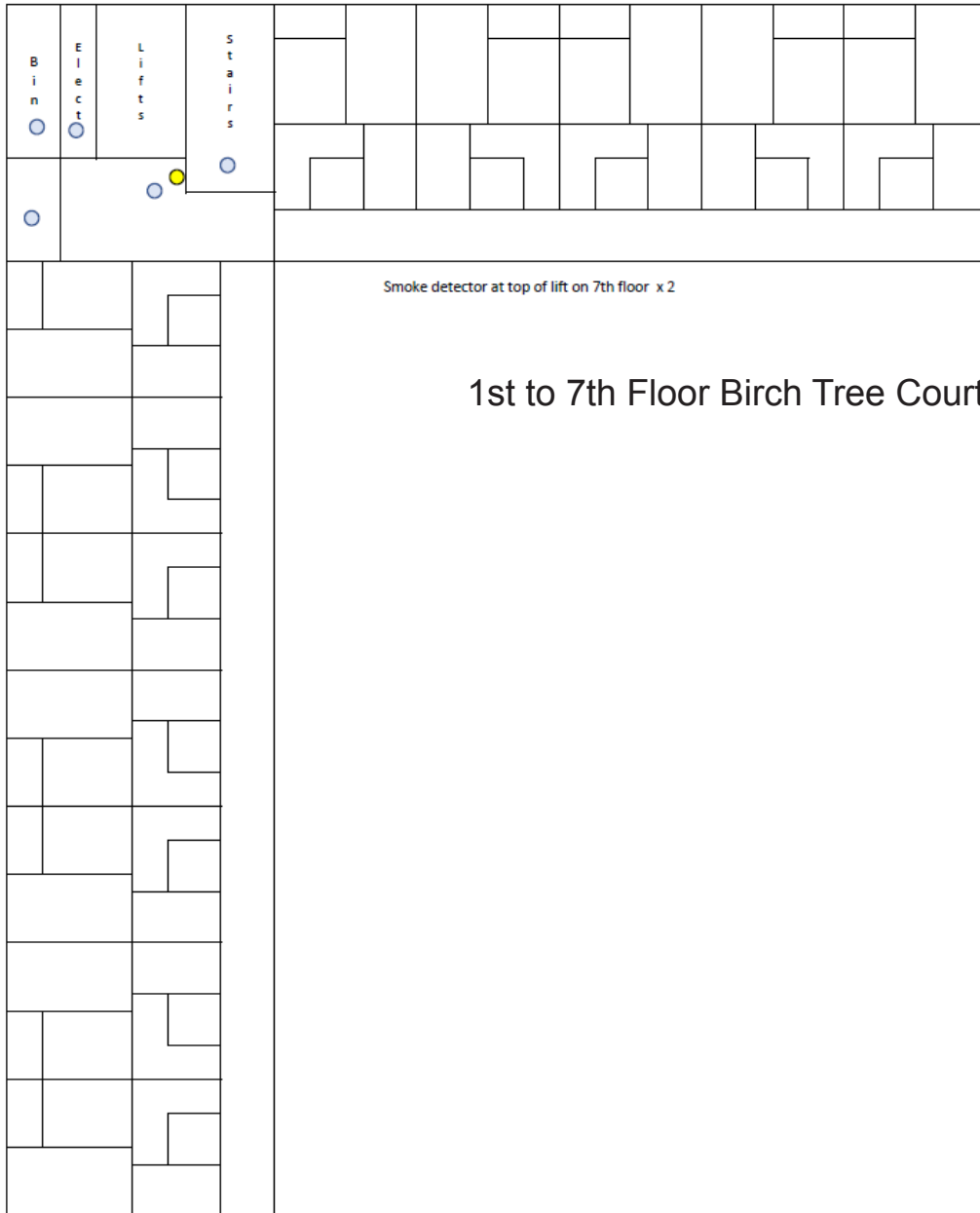
Smoke Detection installed in each flat



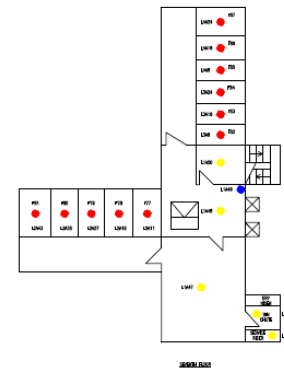
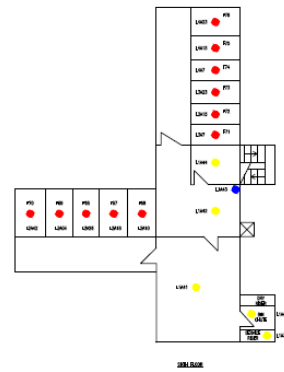
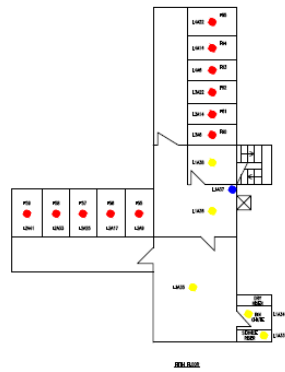
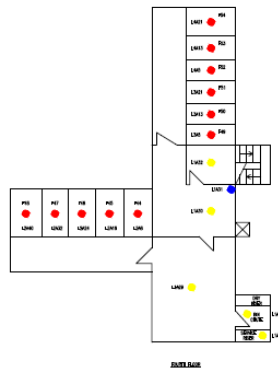
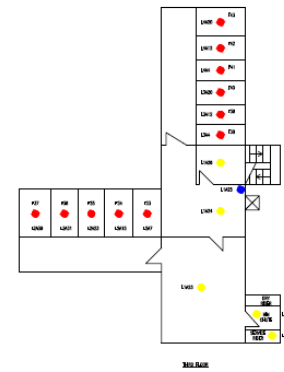
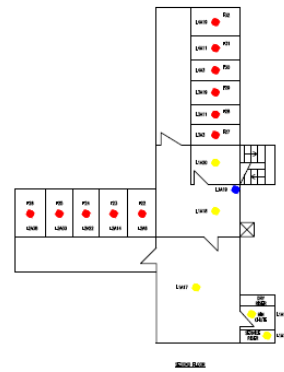
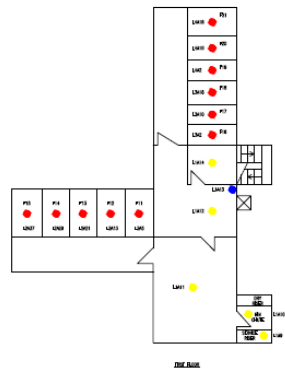
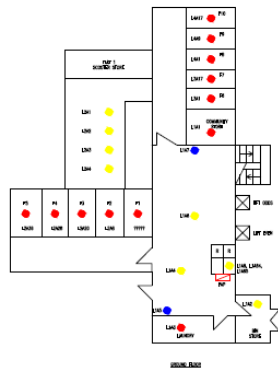
Ground floor Fire Alarm system to common areas



Fire Alarms 1st to 7th Floor



Fire alarm Zone Plan



Project Name	BIRCHTREE COURT
Project No.	27
Revision	01
Scale	1:100
Author	AL
Check	AL
Date	11/11/2024
Sheet No.	01
Total Sheets	01

Almas Circuit
 ELECTRICAL CONTRACTORS
 10000 16th Avenue SW, Suite 100
 Richmond, BC V6V 2G9
 Tel: 604-273-8888
 Fax: 604-273-8889
 Email: info@almascircuit.com

Fieldway Group
 10000 16th Avenue SW, Suite 100
 Richmond, BC V6V 2G9
 Tel: 604-273-8888
 Fax: 604-273-8889
 Email: info@fieldwaygroup.com

BIRCHTREE COURT
 FIRE ALARM ZONE PLAN